

2023 annual report to the
Community

St Leonards Primary School

St Leonards Primary School number: 0391

Partnership: Holdfast



School principal:

Corey Mudie



Government
of South Australia
Department for Education

Date of endorsement:

13/02/2024

Context Statement

St Leonards Primary School caters for students from R-6. At the time of this report, the enrolment in 2023 is 372. St Leonards Primary School is classified as Category 6 on the Department for Education Index of Educational Disadvantage. At the time of this report, the school population includes 2% Aboriginal students, 3% students with disabilities, 10% students with English as an additional language or dialect (EALD) funded background, 1% children/young people in care. Further information about the school is available on the school's website (including its context statement), as well as the My School website.

Governing Council Report

After several disruptive years with COVID, 2023 felt like we were back in full swing again. We have been very lucky to have Corey, Naomi and Stevo as our leadership team as Dave Henty-Smith took some time to travel and subsequently retired. It was wonderful to give him a fitting send off at the end of the year with a series of farewells.

I would like to acknowledge and thank our Governing Council members for their tireless efforts across the year. The formal positions for 2023 SLPS Governing Council (GC) were held by: Chairperson: Rachel Newrick, Deputy Chairperson: Bianca Perry, Treasurer: Peter Heading, Secretary: Jane Downes.

The following sub-committees met across the year - Finance, Leadership, OSHC, Canteen, Community & Fundraising, Grounds, Sports and Education/Wellbeing for Learning. I'd like to also thank the parents who contributed as members of a sub-committee. You don't need to be a member of the Governing Council to participate in our sub-committees, parents are more than welcome to participate wherever they are interested.

We have had a productive year with the following highlights:

Education/Wellbeing for Learning — Reporting on progress of the Site Improvement Plan and updating of policies with some great presentations on our learners progress particularly with writing.

Sport — The after school sports are all volunteers run. This year, many families contributed to provide opportunities for our children to play soccer, netball, tee ball and Auskick.

Community & Fundraising — The fundraising and community gathering events were back in full swing this year. Our fundraising goals have been focussed on upgrades to the playgrounds.

Grounds — Maintaining the school grounds with a working bee. Upgrades to the small playground were completed with the support of fundraising. Our school garden continues to grow providing great learning opportunities across the school. The partnership with the canteen has ensured the availability of fruits and vegetables all year round for the students.

Canteen — The canteen has gone from strength to strength this year. QKR is increasingly the payment mechanism used most frequently. The variety and quality of the food and the many specials using produce from the school garden has seen the financial position of the canteen the strongest it has been in some time.

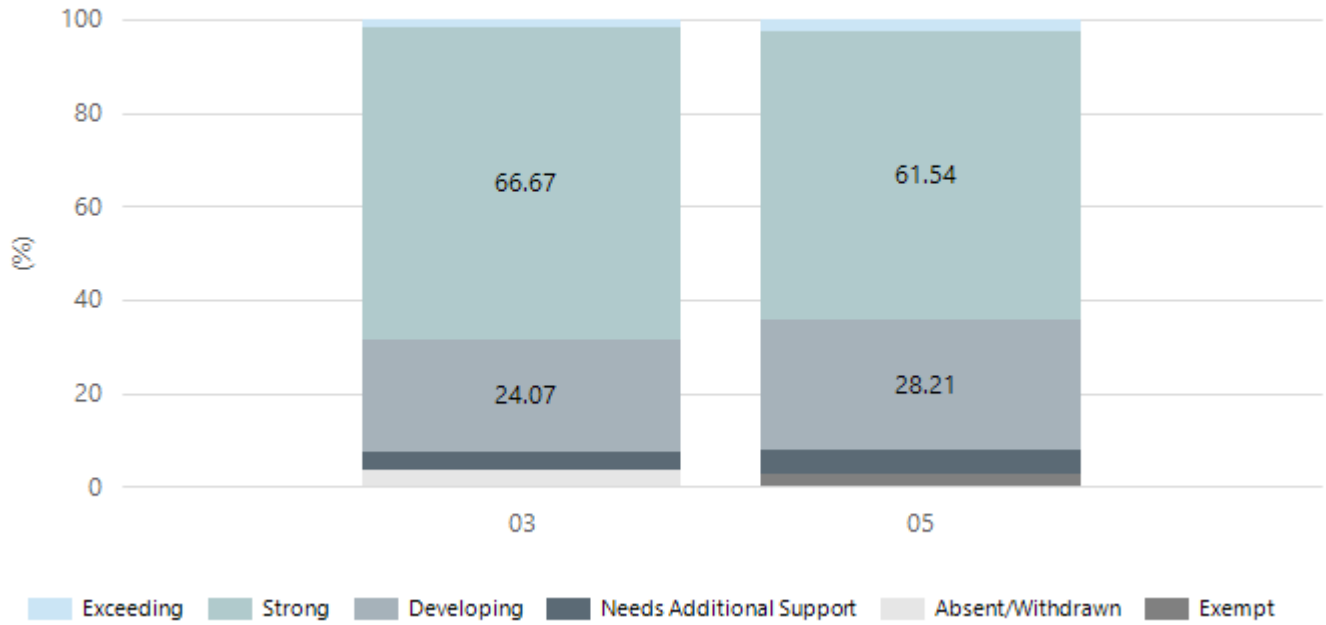
OSHC — OSHC continues to support families with before and after school care as well as school holiday and pupil free days. The team had a big effort early in the year to review all of the OSHC policies and procedures.

Performance Summary

NAPLAN Proficiency

In 2023, the Australian Curriculum, Assessment and Reporting Authority (ACARA) - a Commonwealth Independent statutory authority - announced changes to NAPLAN performance reporting. This new way of reporting by ACARA that NAPLAN results from 2023 will not be comparable to previous years. The new approach replaces the previous numerical NAPLAN bands and the national minimum standard.

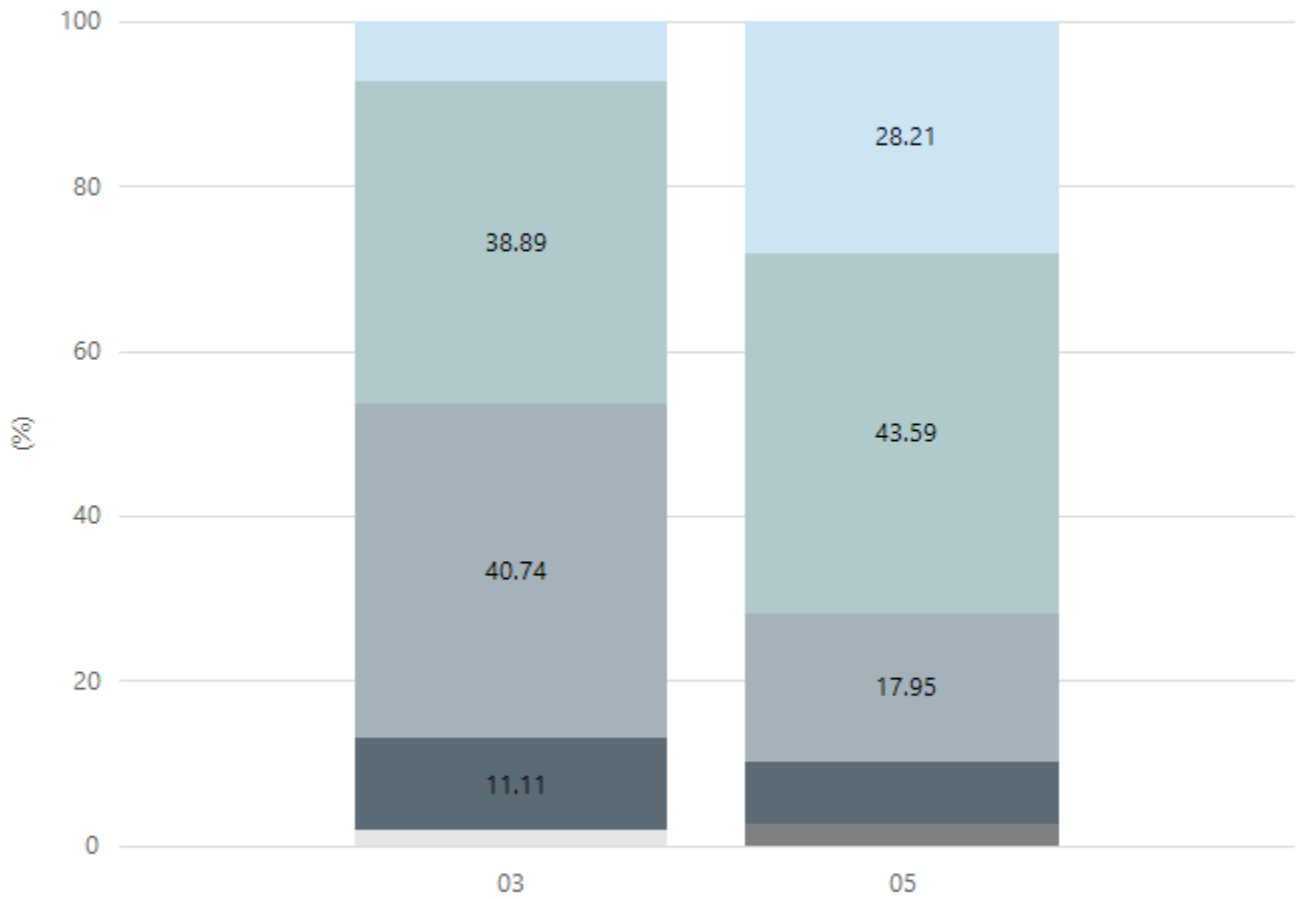
Numeracy



Year Level	03	05
Exceeding	1	1
Strong	36	24
Developing	13	11
Needs Additional Support	2	2
Absent/Withdrawn	2	
Exempt		1
Total	54	39

Data Source: Department for Education Assessment Data Holdings, 2023. When there are less than six students in a cohort, no data is supplied.

Reading

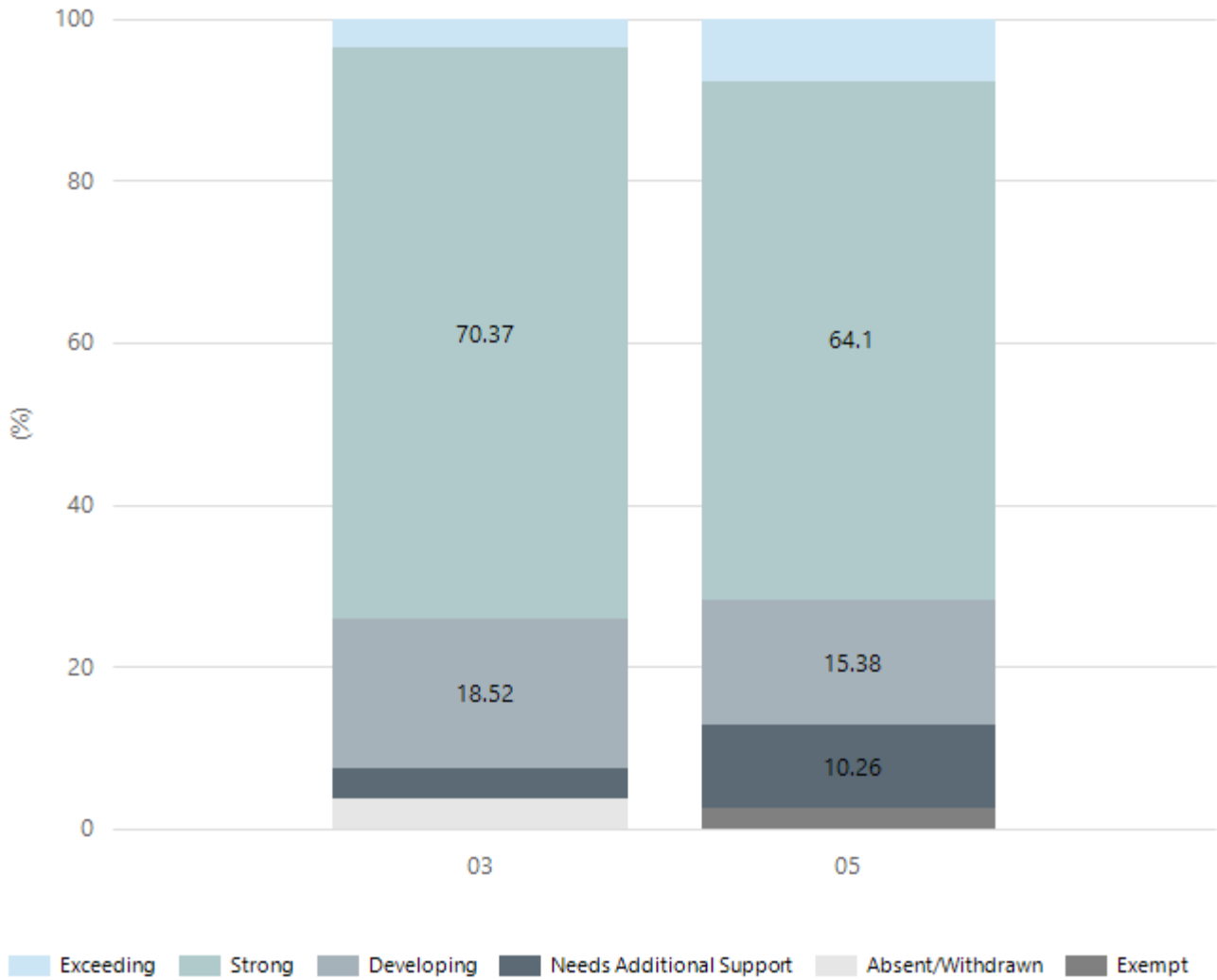


Exceeding Strong Developing Needs Additional Support Absent/Withdrawn Exempt

Year Level	03	05
Exceeding	4	11
Strong	21	17
Developing	22	7
Needs Additional Support	6	3
Absent/Withdrawn	1	
Exempt		1
Total	54	39

Data Source: Department for Education Assessment Data Holdings, 2023. When there are less than six students in a cohort, no data is supplied.

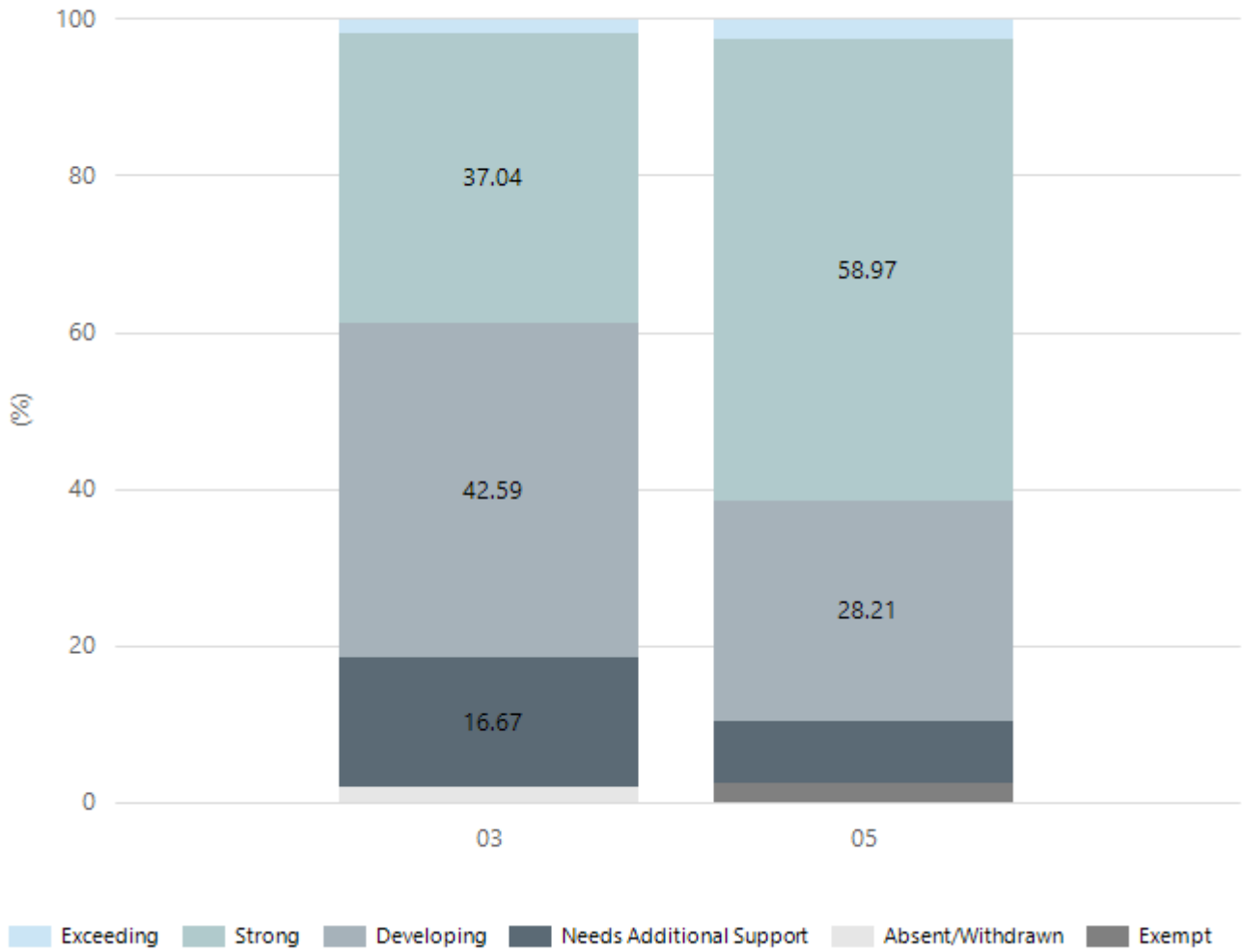
Writing



Year Level	03	05
Exceeding	2	3
Strong	38	25
Developing	10	6
Needs Additional Support	2	4
Absent/Withdrawn	2	
Exempt		1
Total	54	39

Data Source: Department for Education Assessment Data Holdings, 2023. When there are less than six students in a cohort, no data is supplied.

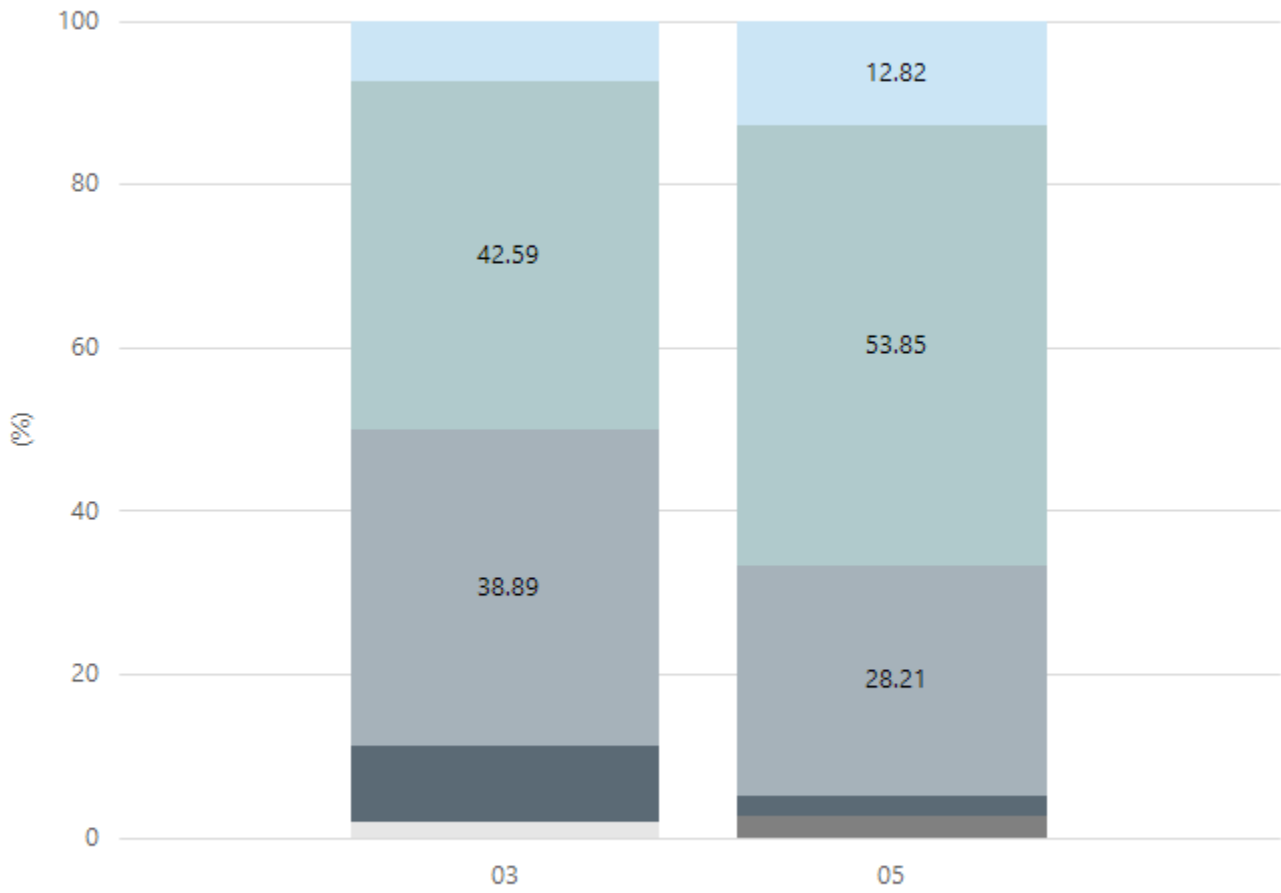
Grammar



Year Level	03	05
Exceeding	1	1
Strong	20	23
Developing	23	11
Needs Additional Support	9	3
Absent/Withdrawn	1	
Exempt		1
Total	54	39

Data Source: Department for Education Assessment Data Holdings, 2023. When there are less than six students in a cohort, no data is supplied.

Spelling



Exceeding Strong Developing Needs Additional Support Absent/Withdrawn Exempt

Year Level	03	05
Exceeding	4	5
Strong	23	21
Developing	21	11
Needs Additional Support	5	1
Absent/Withdrawn	1	
Exempt		1
Total	54	39

Data Source: Department for Education Assessment Data Holdings, 2023. When there are less than six students in a cohort, no data is supplied.

School Attendance

Year Level	2021	2022	2023
Reception	95.0%	90.9%	91.8%
Year 01	93.8%	91.6%	91.0%
Year 02	93.7%	91.3%	91.6%
Year 03	93.4%	91.6%	90.0%
Year 04	92.2%	92.2%	90.6%
Year 05	92.3%	90.1%	90.0%
Year 06	93.7%	89.2%	90.3%
Year 07	88.0%		
Total	92.8%	91.0%	90.8%

Data Source: Department for Education Attendance Data, Semester 1 Report 2023. A blank cell indicates there were no students enrolled. 'Primary Other' includes students enrolled in specialised education options. 'Secondary Other' includes students who have already spent a year at Year 12 and elected to undertake further study at Year 12.

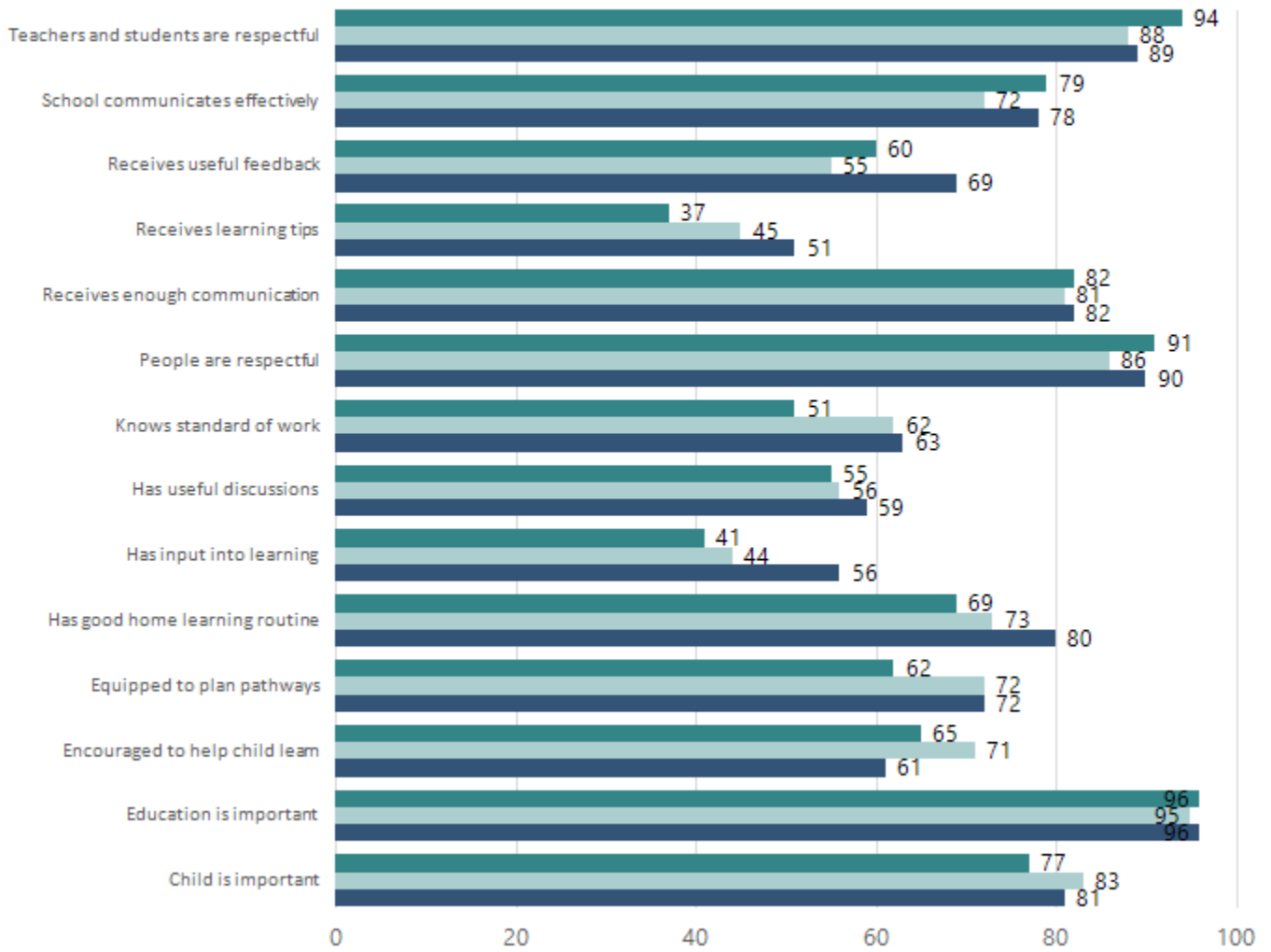
Attendance Comment

In South Australia, all children and young people must be in school from 6 years to 16 years old. They must attend a government or non-government school full time. From age 16 to 17 however, young people must attend school or an approved learning program (such as an apprenticeship, traineeship, accredited course or university). Schools and parents must encourage and support students to come to school every day. Parents and caregivers must make sure their child is enrolled in a school, and attends school all day and everyday it is open, unless a child is sick or has an approved exemption. Teachers and leaders actively follow up when a student misses school, including recording all absences and non-attendance. All schools in South Australia have local attendance procedures governed under the Education and Children's Services Regulations 2020.

Parent Opinion Survey Results

Proportion of agree/strongly agree response(%)

2021 2022 2023



Data Source: 2023 Department for Education Parent Opinions Survey, Term 3 2023.

Intended Destination

Leave Reason	Number	%
NG - ATTENDING NON-GOV SCHOOL IN SA	4	27.0%
TG - TRANSFERRED TO SA GOVERNMENT SCHOOL	11	73.0%

Data Source: Department for Education Destination Data Report, 2023. Data extract term 3 2023. Data shows recorded destinations for students that left the school in the previous year. Data is uploaded by schools in term 3 and may not reflect final or total figures at time of report creation.

Highest Qualifications held by the teaching workforce and workforce composition

All teachers at this school are qualified and registered with the SA Teachers Registration Board.

Qualification Level	Number of Qualifications
Bachelor's degrees or Diplomas	14
Postgraduate Qualifications	10

Data Source: Data extracted from Mandatory Workforce Information Collections as on the last pay date of June 2023. As self-reported by staff in the system.

Please note: Data includes staff who are Actively employed and on extended paid leave. Please note only the highest qualification of the Teaching staff is reported. Excludes any number of other certifications earned.

Workforce composition including indigenous staff

	Non-Teaching Staff		Teaching Staff	
	Indigenous	Non-Indigenous	Indigenous	Non-Indigenous
Full-Time Equivalents	0.0	9.1	0.6	21.6
Persons	0.0	13.0	1.0	23.0

Data Source: Data extracted from Mandatory Workforce Information Collection as on the last pay date of June 2023.

Please note: Data includes staff who are actively employed and on extended paid leave. "Indigenous category" is self-reported by staff in the system.

Financial Statement

Funding Source	Amount
Grants: State	\$3,743,851
Grants: Commonwealth	\$48,341
Parent Contributions	\$193,995
Fund Raising	\$16,538
Other	\$123,579

Data Source: School supplied data.